



Bulkeley Valley Backpackers

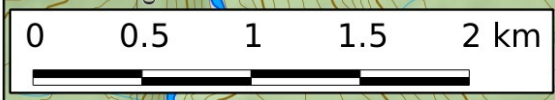
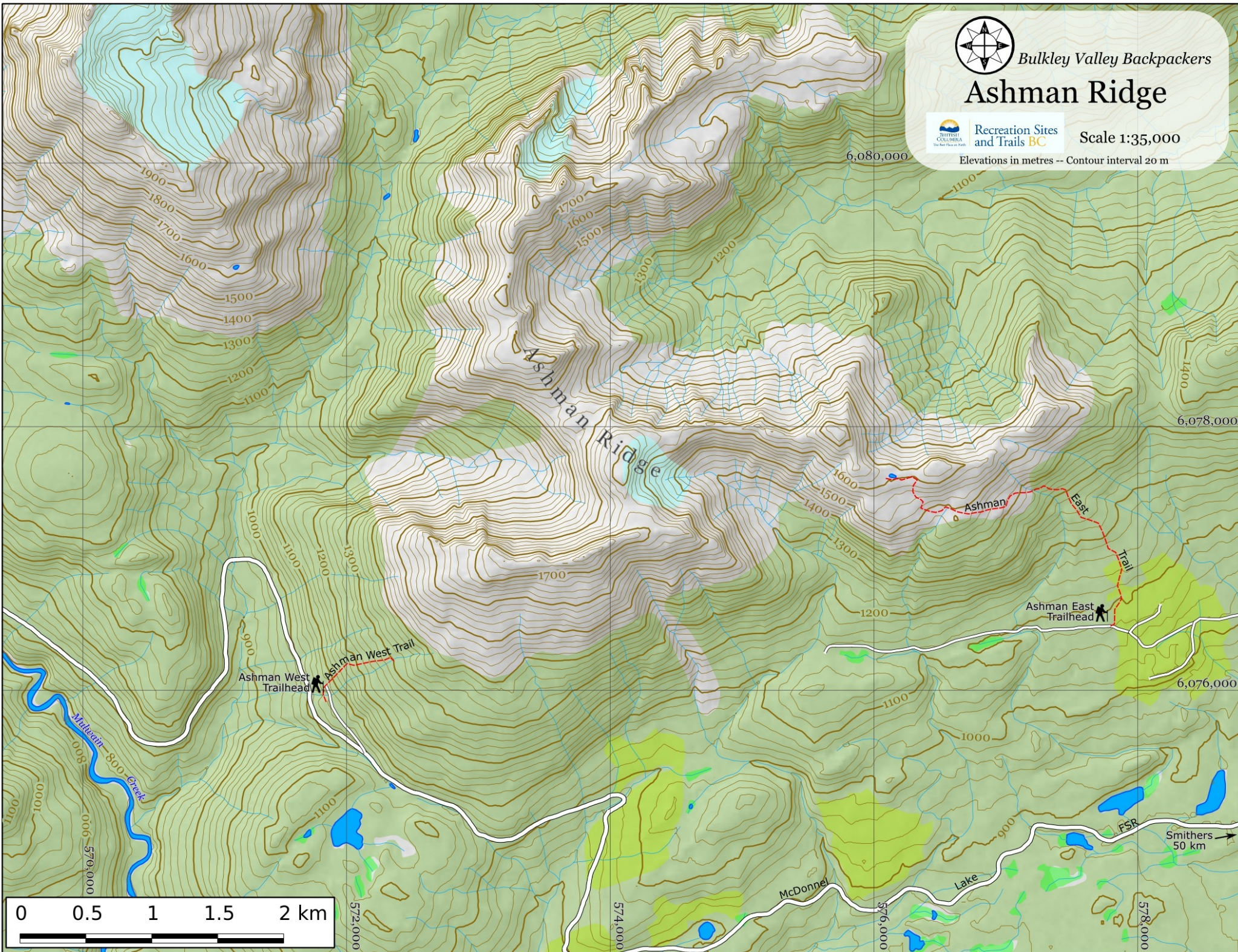
Ashman Ridge



Recreation Sites
and Trails BC

Scale 1:35,000

Elevations in metres -- Contour interval 20 m



ASHMAN EAST and WEST

Directions for Ashman East

From Smithers drive up the Ski Hill Road and go left at the 'Y' onto the McDonnell FSR. Drive 37.5 km and go right onto the Cable FSR. Staying on the main travelled surface drive 3.8 km. Look for the trailhead sign on your right and park just ahead on your left. The trail follows the edge of the cut block and then turns left across large

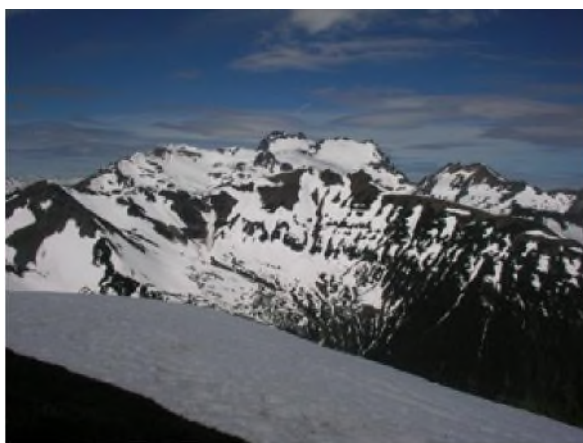


subalpine meadows. Take care following the trail through the dense meadows to ensure you don't get on a game trail. About 2.5 h to peak and 2 h down.

Ashman East This is a wet trail through thick meadows to a low peak with a good view of a large block of mountains. Watch for mountain goats on nearby slopes. Interesting geology on summit. The trail has a wide variety of subalpine plants but can be difficult to follow, when the growth is tall. This trail can connect with the Ashman West Trail.

Directions for Ashman West Follow the italicized directions above, then these further directions: Drive past the Cable FSR and stay on the main travelled road (turn uphill at the intersection with the Mulwain FSR. As you approach the 48 km mark (check your odometer as there are few signs) look for a brushed in spur road heading uphill on your right (54° 49' 19.29"N, 127° 52' 39.64"W). Park on the mainline and walk up the spur almost to the end. The signed trailhead will be on your right.

Ashman West This is a steep direct route to the western end of Ashman Ridge. Can be used to connect with the older trail at the eastern end of Ashman Ridge. Great views of peaks and glaciers north of Terrace, the Nipple and other nearby mountains. Watch for mountain goats on nearby peaks. Though well-marked, this is a rough trail so use care if you cross the scree slope at the eastern end. The connector is just beyond the scree. It is a steep 45 minutes to the first view and it keeps getting better. Pick good weather for this trail. This end of the McDonnell Lake Road attracts a lot more fog, cloud and rain than other areas. The forest is old growth hemlock and scruffy balsam fir. The alpine meadows are wet and can be slippery, especially in rain. The summit is at 5600' elevation.



Source: Jim Easterday <http://www.bcnorth.ca>

Photos: Josette Wier, Jim Easterday, Sharon Hill

Map: <http://www.hesperus-wild.org/clients/bvbackpackers/>